

Longley Street, London, SE1 5QQ

A generous four bedroom two bathroom Victorian house located in ever so popular Bermondsey. Downstairs the property features a naturally bright reception room, the first of the four double bedrooms, a guest washroom and a generous modern kitchen leading in to the a massive garden ideal for green lifestyle enthusiasts, entertainment as well as al-fresco dining. The first floor boasts three double bedrooms as well as two stylish family bathrooms. This unique family house is located within walking distance of a plethora of local amenities such as independent bars, cafes, restaurants, boutique shops and award winning markets.

£950,000

- Generous Four Bedroom Victorian House
- Massive Garden
- Guest Lavatory Plus Two Stylish Bathrooms
- Contemporary Kitchen
- Excellent Transport Links
- Walking Distance to Local Markets, cafes and restaurants
- CHAIN FREE

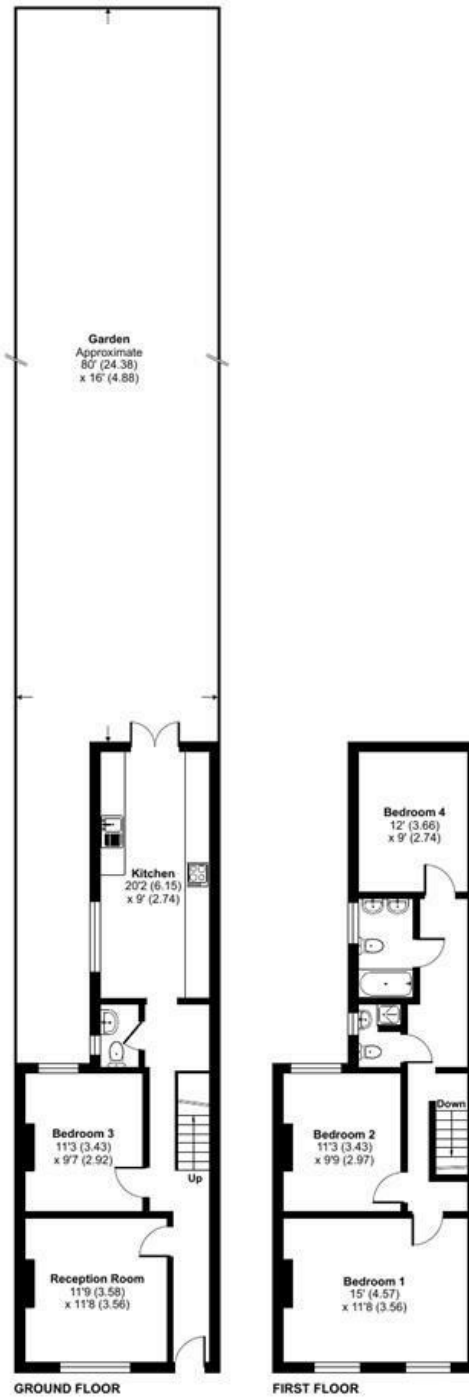
Alex & Matteo
ESTATE AGENTS



Longley Street, London, SE1

Approximate Area = 1192 sq ft / 110.7 sq m

For identification only - Not to scale



Alex & Matteo
ESTATE AGENTS



**Certified
Property
Measurer**

Floor plan produced in accordance with RICS Property Measurement Standards incorporating International Property Measurement Standards (IPMS2 Residential). © nitchcom 2024. Produced for Alex & Matteo Estate Agents. REF: 1124792.

Energy Efficiency Rating		
	Current	Potential
Very energy efficient - lower running costs		
(92 plus) A		88
(81-91) B		
(69-80) C	71	
(55-68) D		
(39-54) E		
(21-38) F		
(1-20) G		
Not energy efficient - higher running costs		
England & Wales		
EU Directive 2002/91/EC		